

related literature | Search www.corning.com/opcomm. Click on "Resources/Standard Recommended Procedures.")

003-876-QSG	Closet Connector Housing (CCH) 1U/2U/3U Quick Start Guide
003-876-QSG-FR	Closet Connector Housing (CCH) 1U/2U/3U Quick Start Guide (French)
003-876	Instruction, Closet Connector Housing (CCH) 1U/2U/3U
003-877-QSG	Closet Connector Housing (CCH) 4U Quick Start Guide
003-877-QSG-FR	Closet Connector Housing (CCH) 4U Quick Start Guide (French)
003-877	Instruction, Closet Connector Housing (CCH) 4U

Table of Contents

1.	Precautions	1
2.	Carton Contents.	2
3.	Preparing Housings for Cassette Installation.	3
4.	Splice Cassette (CCH-CS) Installation — Tight Buffer or Loose Tube Fiber.	6
5.	Splice Cassette (CCH-CS) Installation — Ribbon Fiber	9
6.	Termination Cassette (CCH-CF) Field Termination — Tight Buffer Cable.	12
7.	Termination Cassette (CCH-CF) Field Termination — Loose Tube/Ribbon or 250 μ m Cable. .	12

1. Precautions



WARNING: Never look directly into the end of a fiber that may be carrying laser light. Laser light can be invisible and can damage your eyes. Viewing it directly does not cause pain. The iris of the eye will not close involuntarily as when viewing a bright light. Consequently, serious damage to the retina of the eye is possible. Should accidental eye exposure to laser light be suspected, arrange for an eye examination immediately.



WARNING: DO NOT use magnifiers in the presence of laser radiation. Diffused laser light can cause eye damage if focused with optical instruments. Should accidental eye exposure to laser light be suspected, arrange for an eye examination immediately.



CAUTION: Recommend the use of safety glasses (spectacles) conforming to ANSI Z87, for eye protection from accidental injury when handling chemicals, cables, or working with fiber. Pieces of glass fiber are very sharp and have the potential to damage the eye.



CAUTION: The wearing of cut-resistant safety gloves to protect your hands from accidental injury when using sharp-bladed tools and armored cable is strongly recommended. Use extreme care when working with severed armor. There will be a sharp edge where armor is cut. To minimize the chance of injury from the cut armor, cover the exposed edge with a wrap of electrical tape. To minimize the chance of injury from sharp-bladed tools, always cut away from yourself and others. Dispose of used blades and armor scrap properly.



CAUTION: Cleaved or broken glass fibers are very sharp and can pierce the skin easily. Do not let these pieces of fiber stick to your clothing or drop in the work area where they can cause injury later. Use tweezers to pick up cleaved or broken pieces of glass fibers and place them on a loop of tape kept for that purpose alone. **Good housekeeping is very important.**

2. Carton Contents

2.1 CCH-CS:

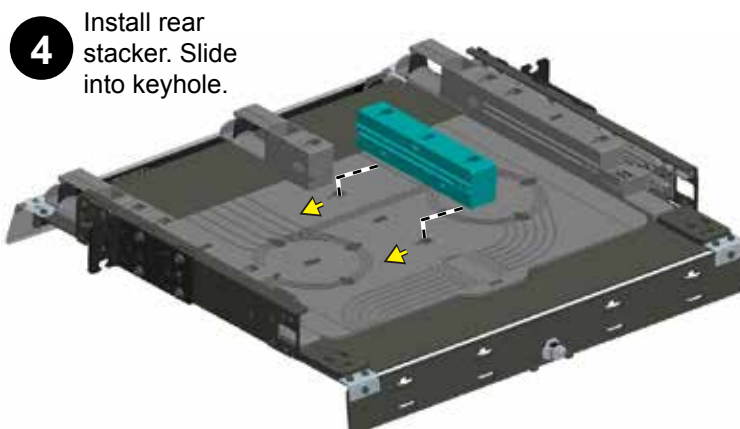
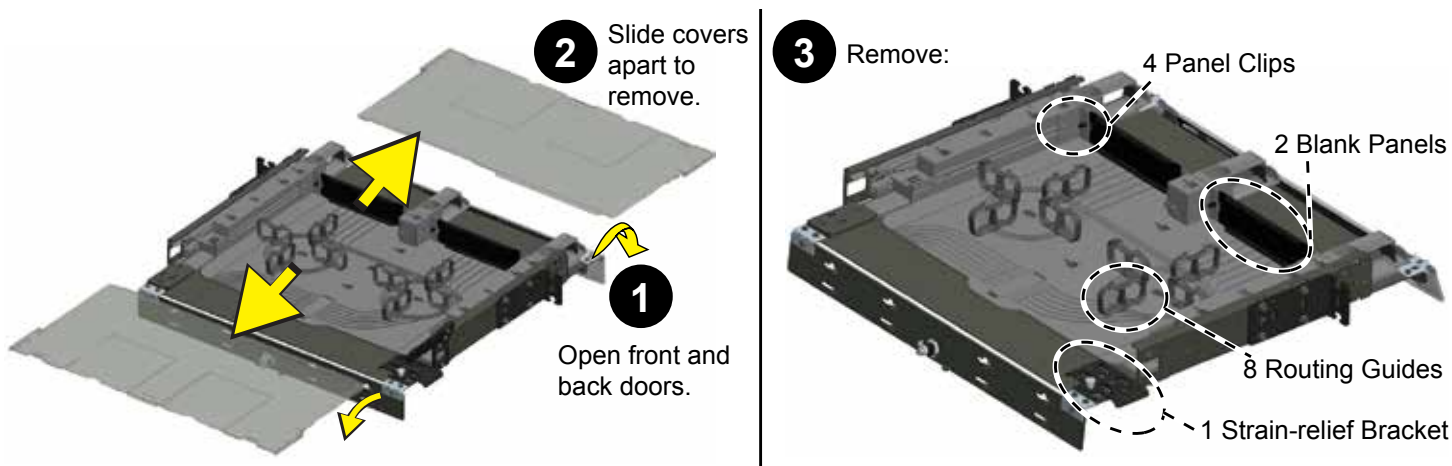
- (1) Instruction, Splice Cassette for CCH Housings
- (2) Track, CCX-04U Housing / Module
- (1) Assembly, Back Stacker, CCH-01U, 02U, 03U
- (1) Base, Module
- (1) Cover, Module
- (1) Splice Tray, Module
- (1) Splice Holder, Module
- (1) Ribbon Tube
- (2) Tubing, Heatshrink, 2-in LG (used in Section 5.1, Step 8.)
- (1) Adapter, Tube (slit), 1/2-in, OD .300-inch, ID .170-inch
- (1) Splice Protector (Heatshrink) (T), IF, 12/pk (60mm)
- (4) Cable Tie, 1/8 x 4-in, white
- (1) Tubing, Braided, 1/4-in, FR PET, black (used in Section 4.3, Step 10 on right, and Section 5.2, Step 18)

2.2 CCH-CF

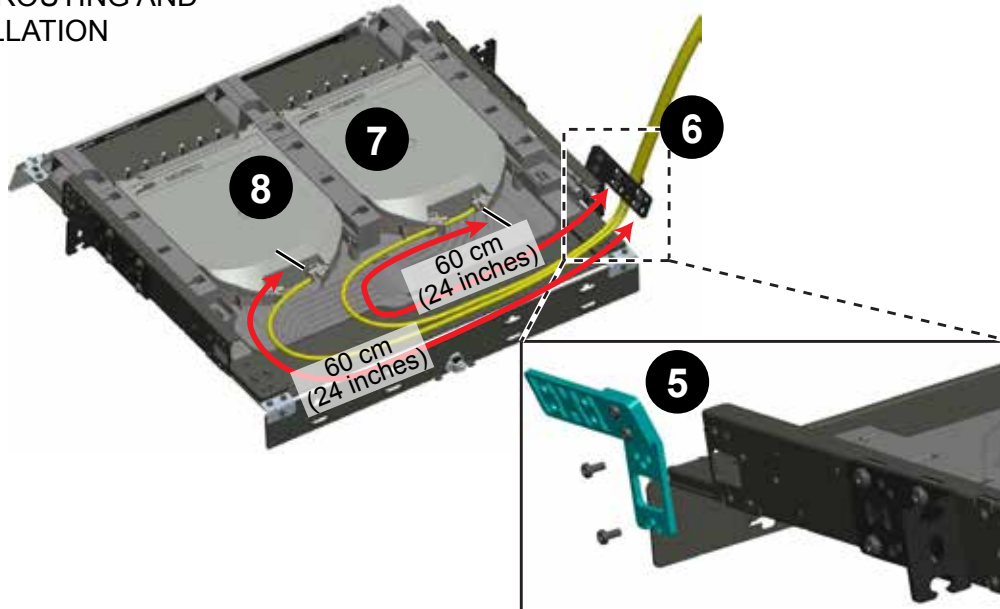
- (1) Instruction, Splice Cassette for CCH Housings
- (2) Track, CCX-04U Housing / Module
- 1) Assembly, Back Stacker, CCH-01U, 02U, 03U
- (1) Base, Module
- (1) Cover, Module
- (4) Cable Tie, 1/8 x 4-in, white
- (1) Tubing, Braided, 1/4-in, FR PET, black (used in Section 4.3, Step 10 on right, and Section 5.2, Step 18)

3. Preparing Housings for Cassette Installation

3.1 Cassette Installation in CCH-01U, CCH-02U, or CCH-03U Closet Connector Housing



NOTE: FINAL ROUTING AND INSTALLATION

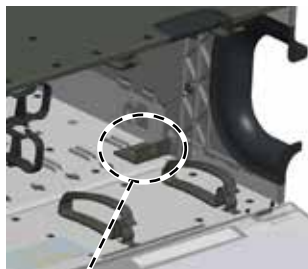
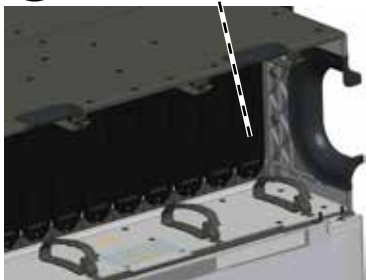


TPA-3943

3.2 Cassette Installation in CCH-04U Closet Connector Housing

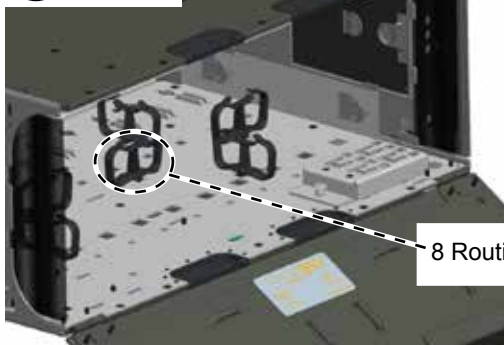
1 Open front and rear doors.

2 Remove:
12 Blank Panels



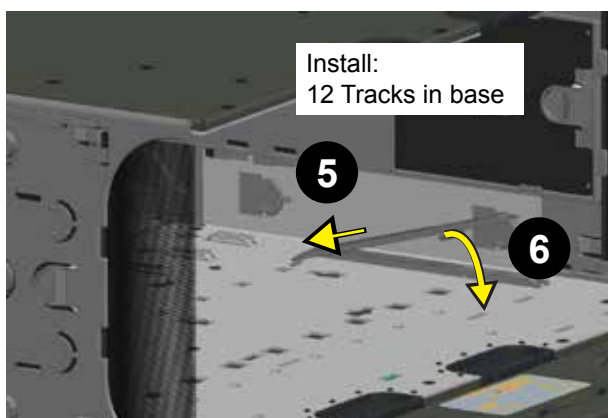
3 Remove:
24 Panel Clips

4 Remove:



8 Routing Guides

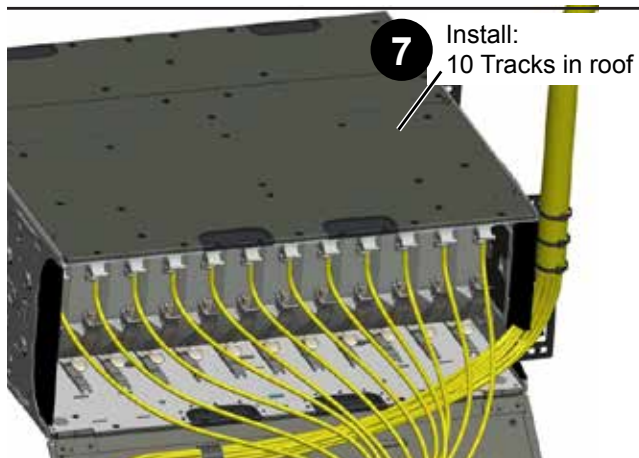
TPA-3944



Install:
12 Tracks in base

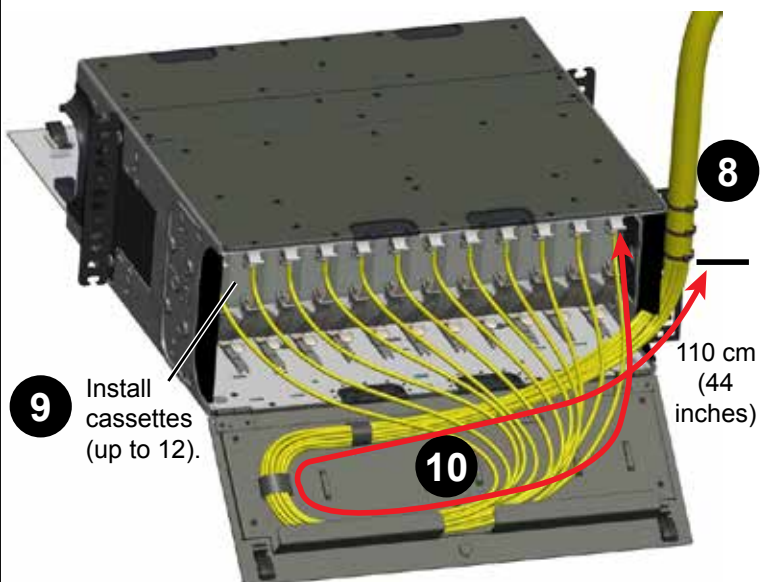
5

6



7 Install:
10 Tracks in roof

NOTE: FINAL ROUTING AND INSTALLATION



9 Install
cassettes
(up to 12).

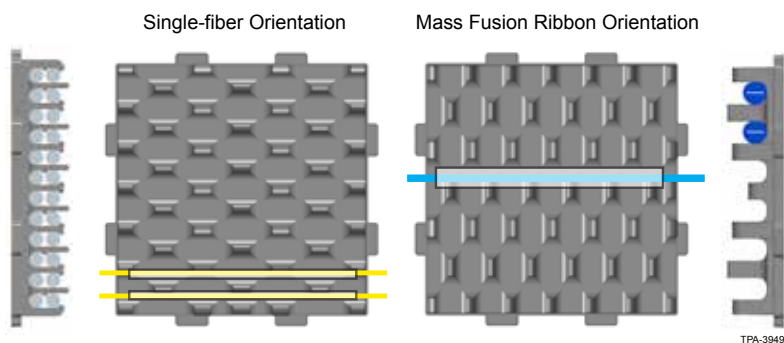
10

110 cm
(44
inches)

TPA-3945

3.3 Preparing Splice Cassette

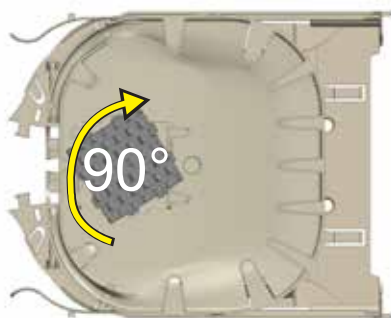
NOTE: Rotate splice organizer 90-degrees from its factory-installed orientation meant for single fibers to the orientation shown for ribbon fiber splices.



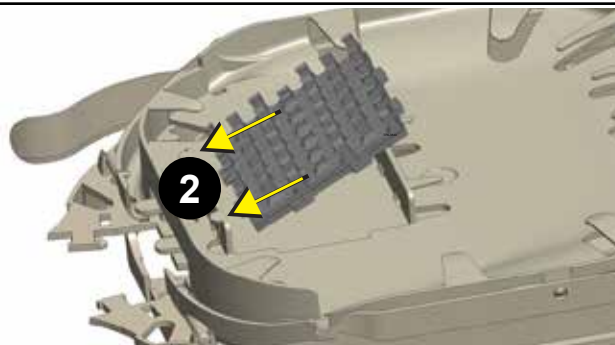
1

Remove cover.

Rotate organizer,
if required.

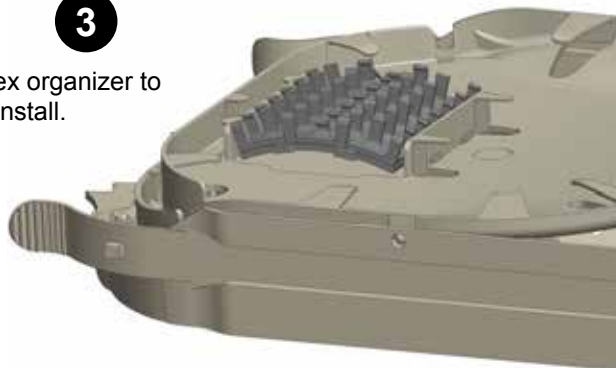


2



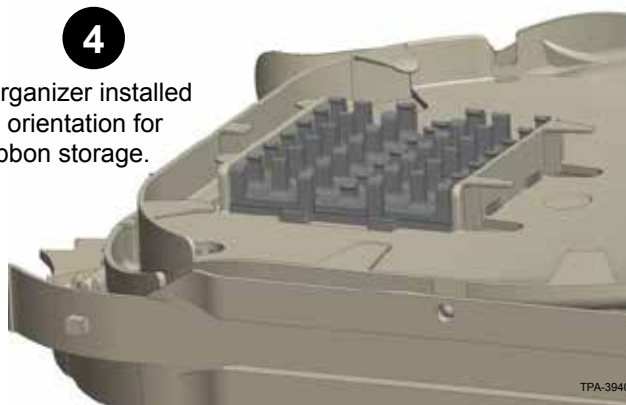
3

Flex organizer to
reinstall.



4

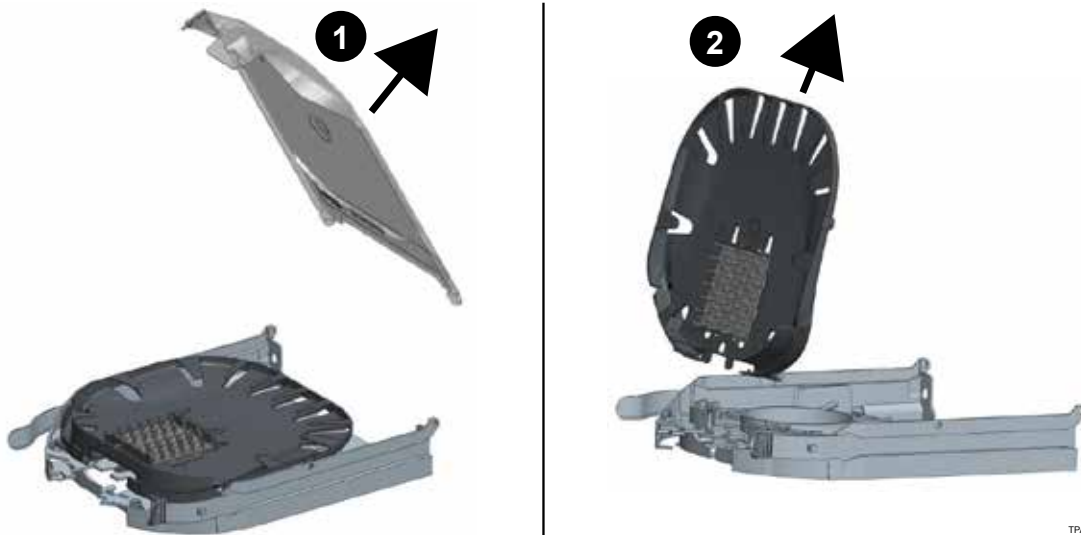
Organizer installed
in orientation for
ribbon storage.



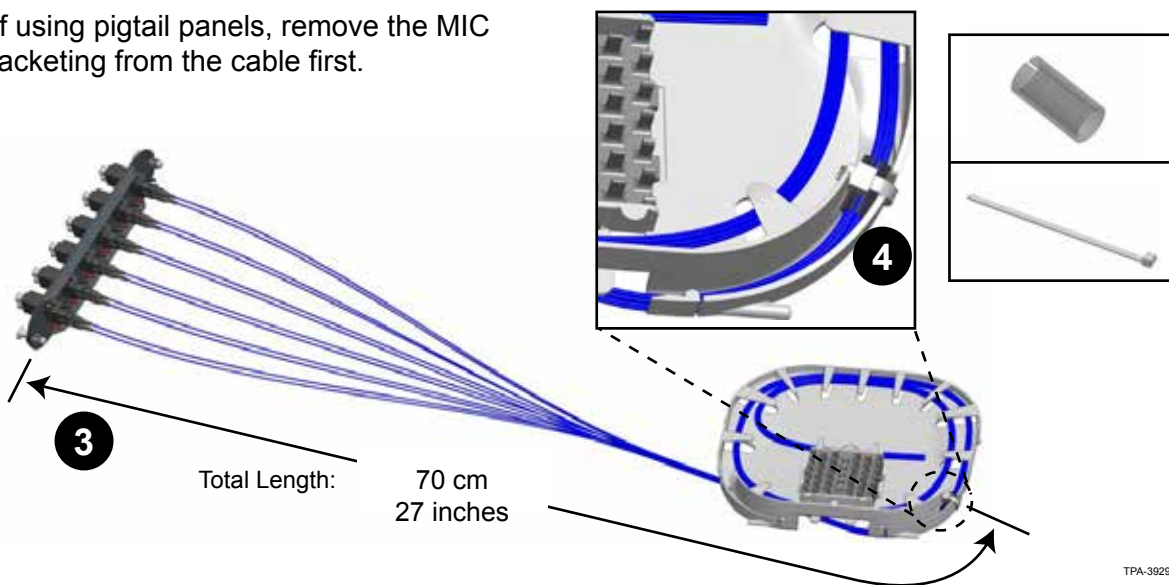
TPA-3940

4. Splice Cassette (CCH-CS) Installation — Tight Buffer or Loose Tube Fiber

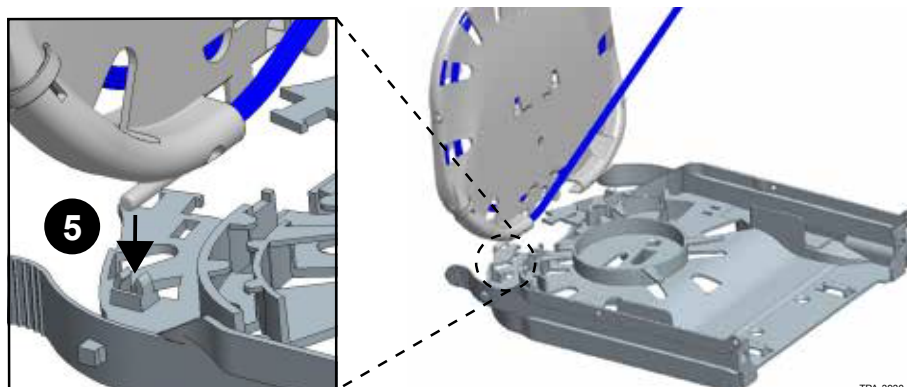
4.1 Fiber Routing

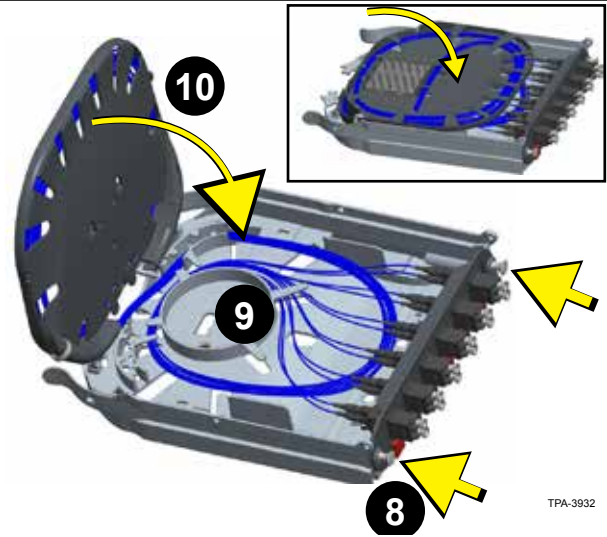
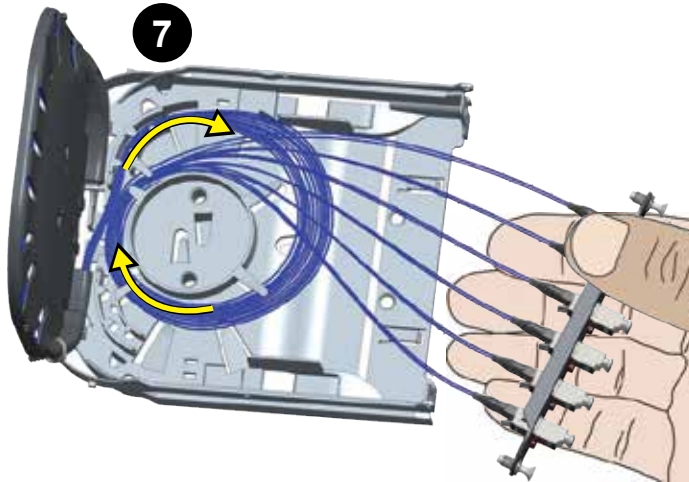
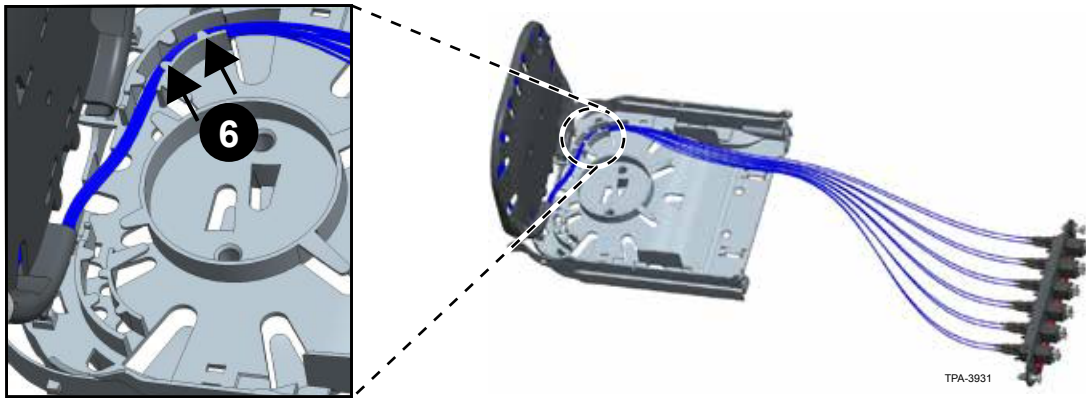


NOTE: If using pigtail panels, remove the MIC jacketing from the cable first.



NOTE: Be sure not to pinch fibers when installing the tray



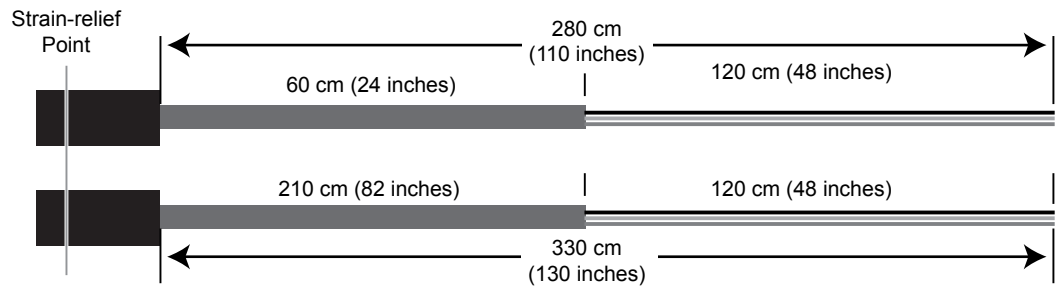


4.2 Incoming Cable Preparation

Strip Lengths
for Splicing

1U/2U/3U Housing

4U Housing



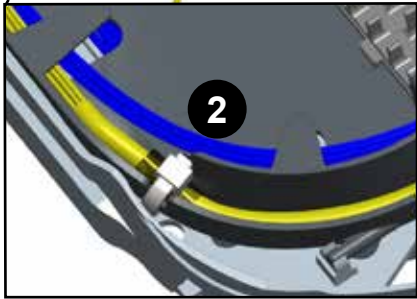
TPA-3951

4.3 Splicing Tight Buffer or Loose Tube Fiber



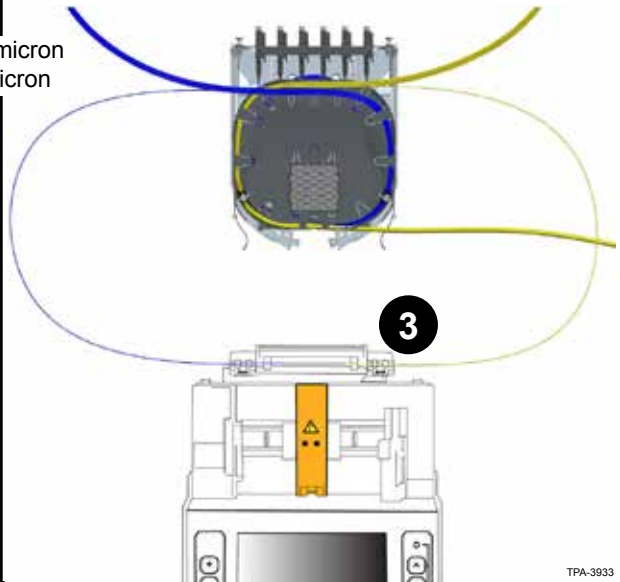
1

Cut to:
120 cm (48 inches) - 250 micron
90 cm (35 inches) - 900 micron



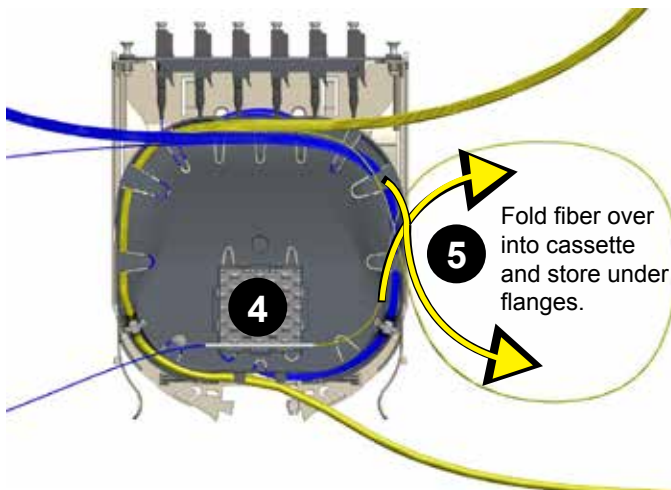
2

Strain-relieve to end of incoming cable.



3

TPA-3933

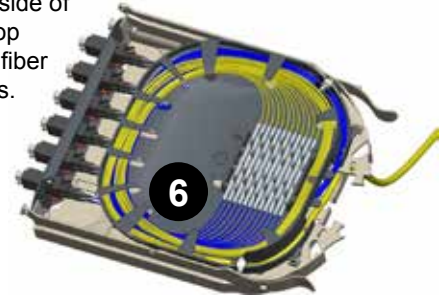


5

Fold fiber over into cassette and store under flanges.

4

Repeat Step 5 on the other side of cassette. Loop and store all fiber under flanges.

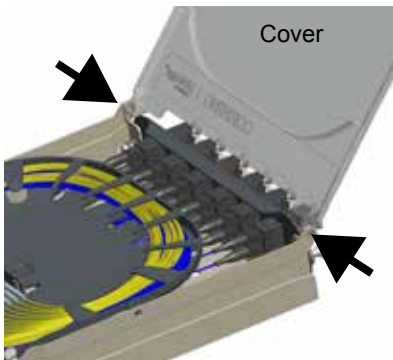


6

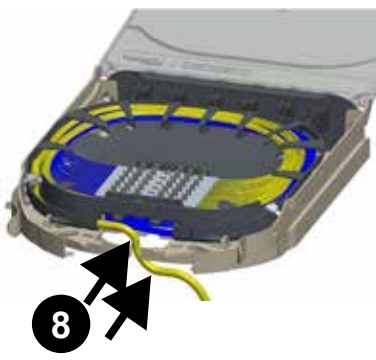
TPA-3934

7

Replace cover.

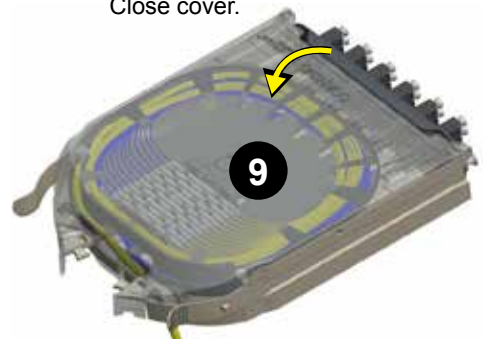


Cover



8

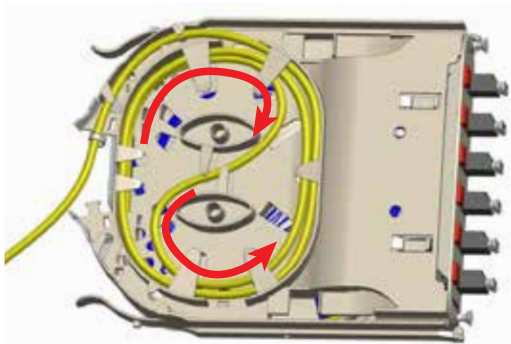
Close cover.



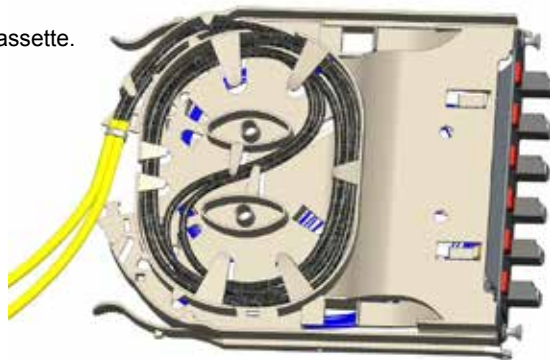
9

TPA-3935

- 10** Store up to 96.5 cm (38 inches) of cable slack under cassette.



Loose Tube Fiber



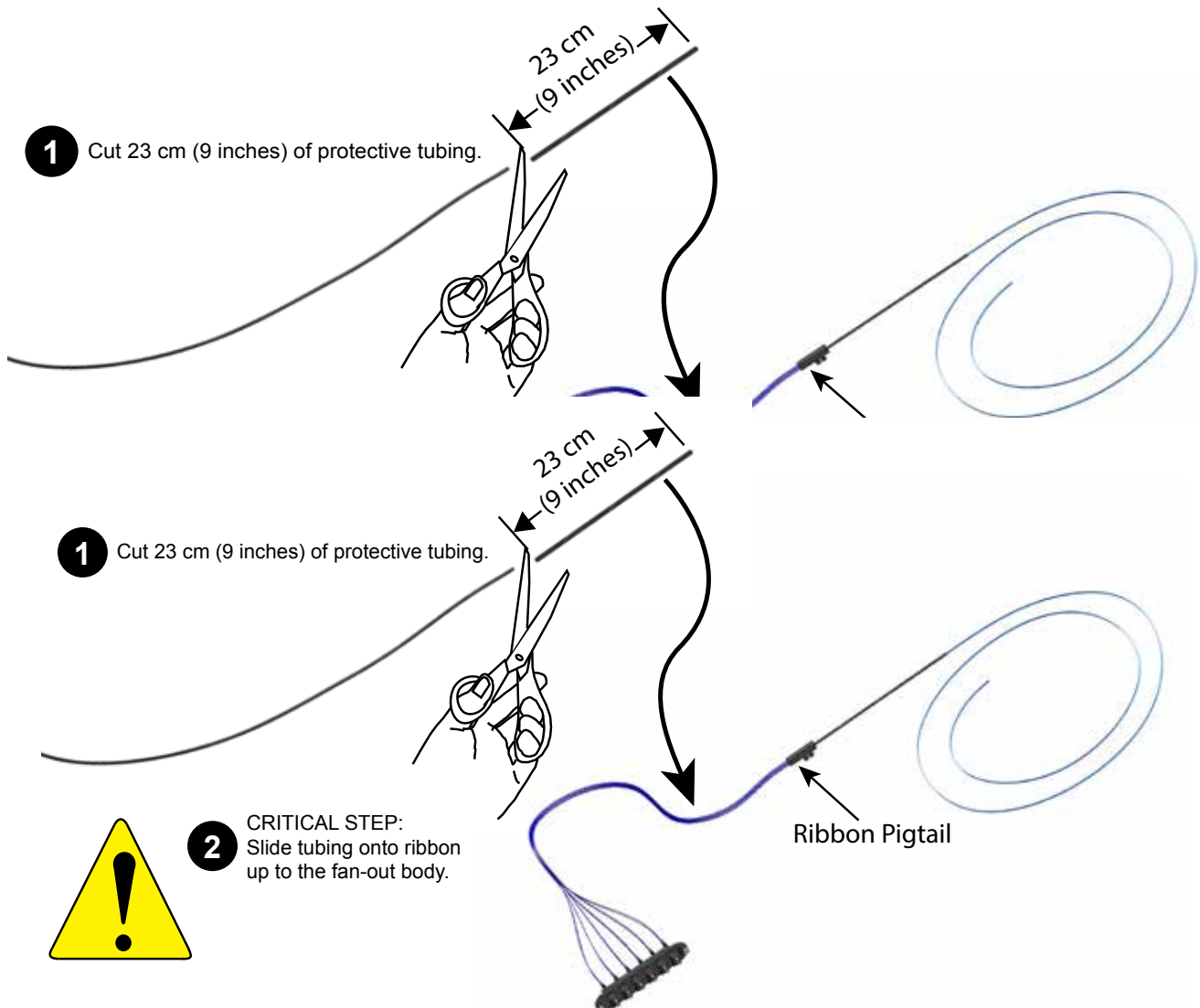
Tight-buffer Fiber

Protect tight-buffer fiber with braided tubing, if needed, for multiple cables or 24-fiber cables.

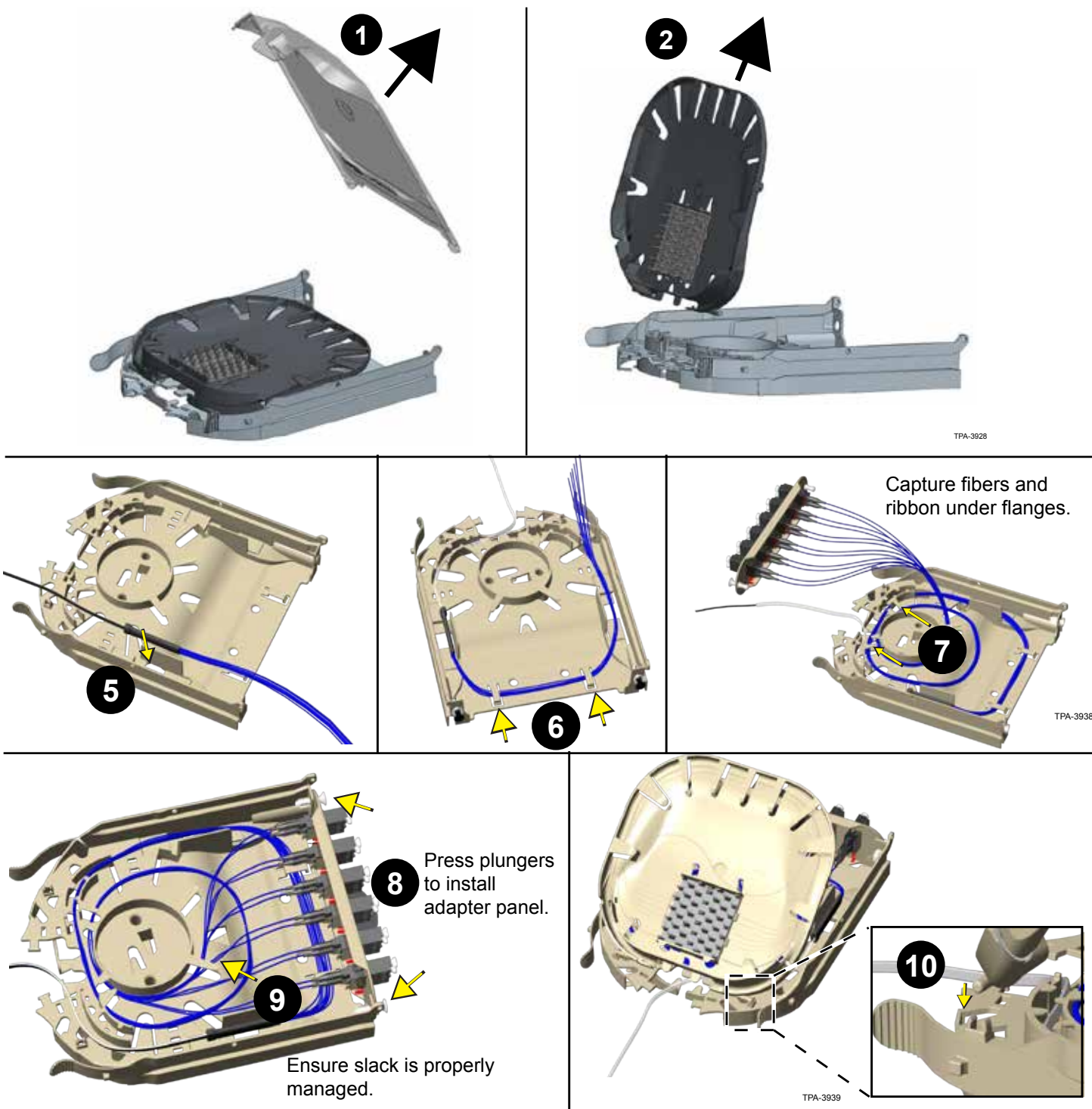
TPA-3950

5. Splice Cassette (CCH-CS) Installation — Ribbon Fiber

5.1 Ribbon Fiber Preparation and Routing



TPA-3937

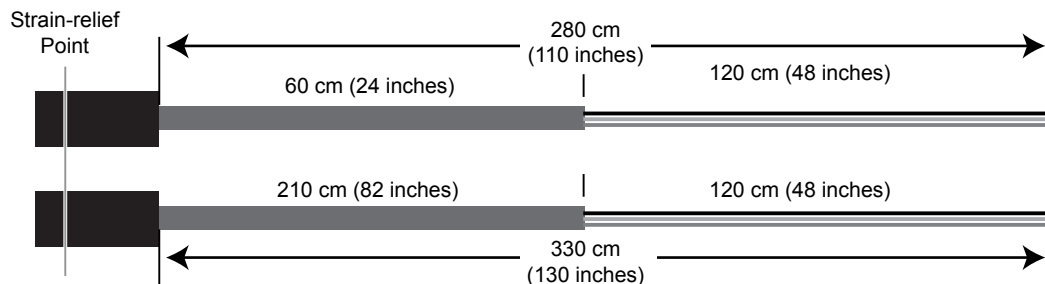


5.2 Incoming Cable Preparation

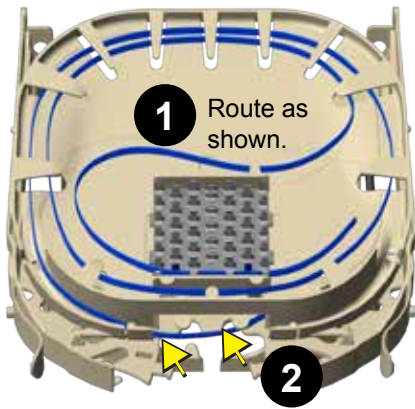
Strip Lengths
for Splicing

1U/2U/3U Housing

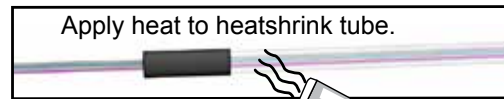
4U Housing



TPA-3951



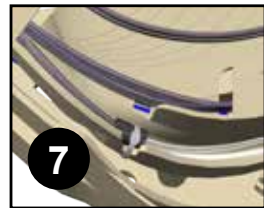
Bring pigtail ribbon from bottom layer into top layer.



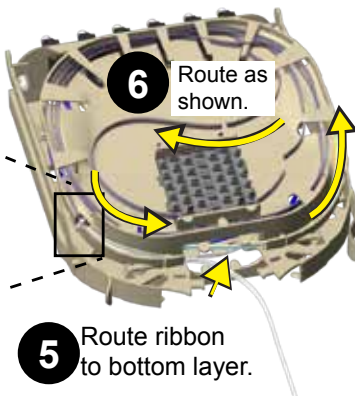
3

Slide heatshrink tube onto ribbon up to jacket.

4

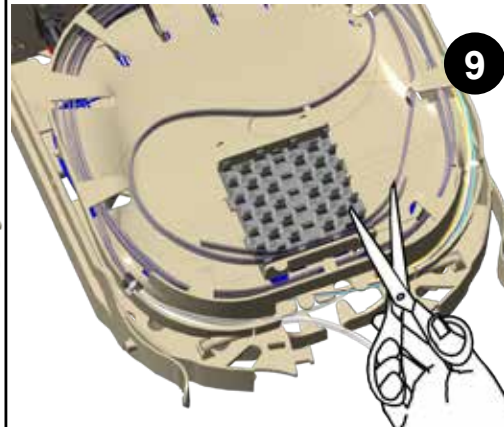


Place ribbons in tube; secure with cable tie.



6 Route as shown.

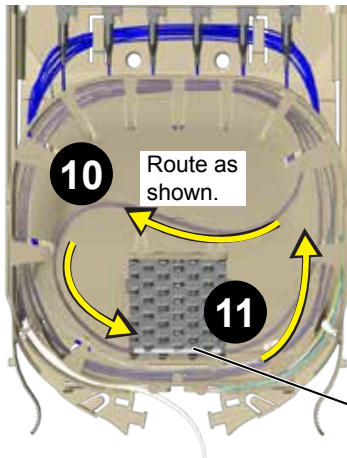
5 Route ribbon to bottom layer.



9 Splice per the instructions provided with the splice equipment.

8 Cut ribbons in center of organizer.

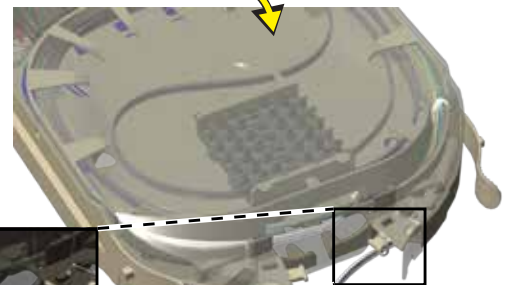
TPA-3941-2



Store heatshrink tubing in splice organizer.

12

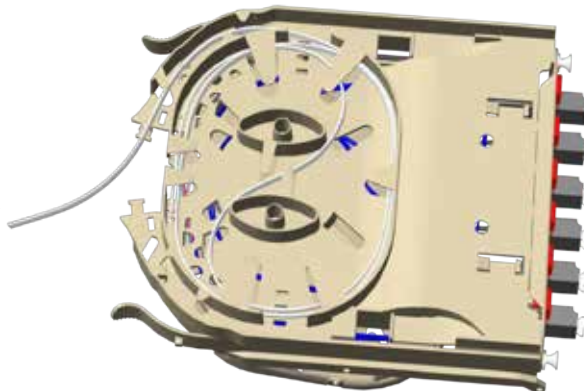
Replace and close cover.



Loosely secure ribbon with cable tie.

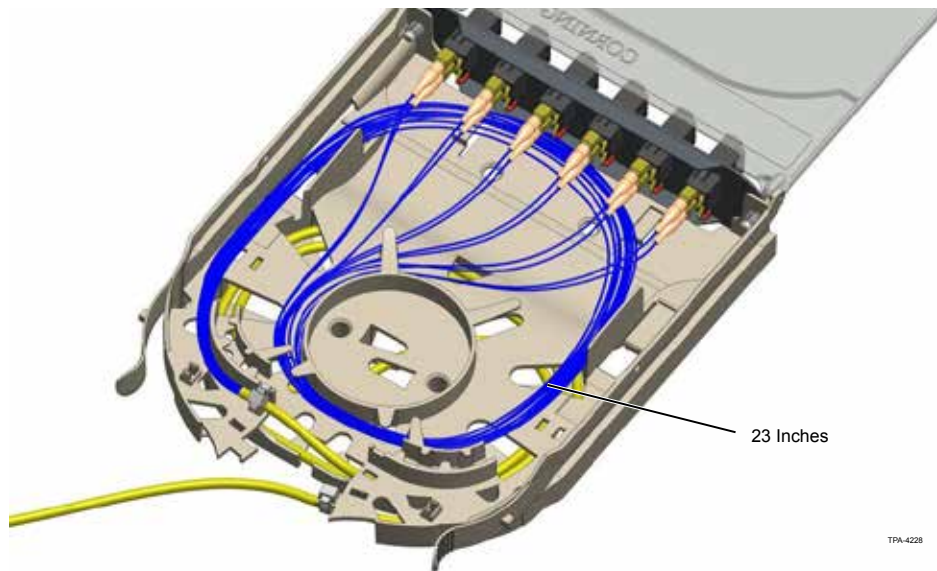
14

Store ribbon in slack storage area on bottom layer.

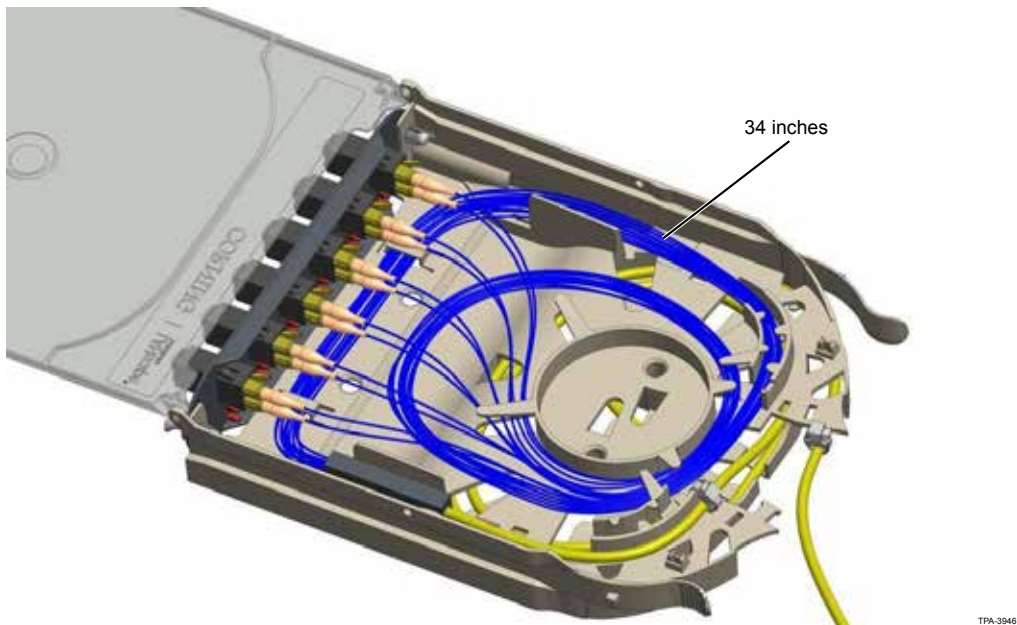


TPA-3942

6. Termination Cassette (CCH-CF) Field Termination — Tight Buffer Cable



7. Termination Cassette (CCH-CF) Field Termination — Loose Tube/Ribbon or 250 μ m Cable



Corning Optical Communications LLC • PO Box 489 • Hickory, NC 28603-0489 USA
800-743-2675 • FAX: 828-325-5060 • International: +1-828-901-5000 • www.corning.com/opcomm

Corning Optical Communications reserves the right to improve, enhance, and modify the features and specifications of Corning Optical Communications products without prior notification. A complete listing of the trademarks of Corning Optical Communications is available at www.corning.com/opcomm/trademarks. All other trademarks are the properties of their respective owners. Corning Optical Communications is ISO 9001 certified. © 2011, 2017 Corning Optical Communications. All rights reserved.