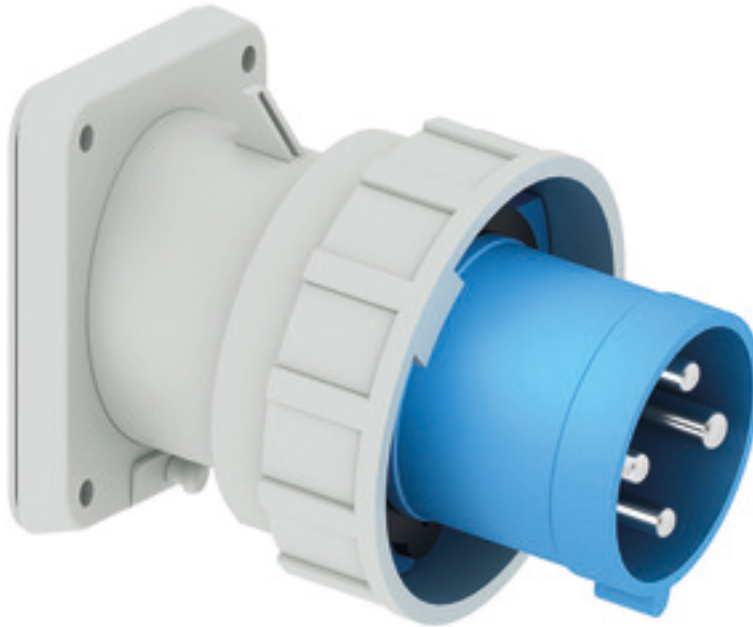


## Panel mounting appliance inlet angled - flange 107x100 fixing centers 85x77

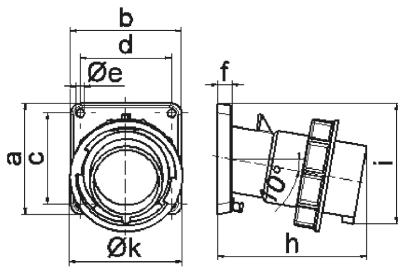


| Product description       |   |
|---------------------------|---|
| BALS-Prd.-Nr              | 27010                                     |
| EAN                       | 4024941270106                             |
| Product category          | TE panel mounting appliance inlet, angled |
| Current                   | 63A                                       |
| Number of poles           | 4p  |
| Arrangement of phases     | 3P+PE                                     |
| Position of earth contact | 9 h                                       |
| Voltage                   | 200 - 250V~                               |

| Product description            |  |
|--------------------------------|--|
| Frequency                      | 50/60Hz  |
| Protection degree              | IP67   |
| Colour code                    | blue RAL 5015  |
| Colour of appliance            | Collar blue RAL 5015, Bayonet ring grey RAL 7035, Enclosure grey RAL 7035                                |
| Connection design              | screw terminal as box terminal   |
| Maximum conductor size         | 16,0 qmm   |
| Cable entry                    | other  |
| Height                         | 131mm  |
| Width                          | 113.5mm  |
| Depth                          | 153mm  |
| Flange size vertical in mm     | 107mm  |
| Flange size horizontal in mm   | 100mm  |
| Drill hole dist. vertical mm   | 85mm   |
| Drill hole dist. horizontal mm | 77mm   |
| Material of enclosure          | Polyamide  |
| Contacts                       | the contact carrier is made of high temperature resistant material, the contacts are brass nickel plated |

| Additional technical properties |                        |
|---------------------------------|------------------------|
|                                 | The inclination is 10° |

| Logistics data |                 |
|----------------|-----------------|
| Weight/pcs     | 0.64 kg / Piece |
| Packaging      | Bag             |
| Content amount | 1 ST            |
| EAN            | 4024941270106   |
| Length         | 153 mm          |
| Width          | 113.5 mm        |
| Height         | 131 mm          |
| Weight         | 0.641 kg        |
| Volume         | 2,274.881 ccm   |
| Packaging      | Carton          |
| Content amount | 5 ST            |
| EAN            | 4024941823104   |
| Length         | 325 mm          |
| Width          | 217 mm          |
| Height         | 210 mm          |
| Weight         | 3.406 kg        |
| Volume         | 13,588.4 ccm    |



5 MB 22

| Ampere                     | 63    | 63    | 63    |  |  |  |
|----------------------------|-------|-------|-------|--|--|--|
| Polzahl                    | 3     | 4     | 5     |  |  |  |
| a                          | 107,0 | 107,0 | 107,0 |  |  |  |
| b                          | 100,0 | 100,0 | 100,0 |  |  |  |
| c                          | 85,0  | 85,0  | 85,0  |  |  |  |
| d                          | 77,0  | 77,0  | 77,0  |  |  |  |
| e ø                        | 6,5   | 6,5   | 6,5   |  |  |  |
| f                          | 12,0  | 12,0  | 12,0  |  |  |  |
| h                          | 155,0 | 155,0 | 155,0 |  |  |  |
| i                          | 118,0 | 118,0 | 118,0 |  |  |  |
| k                          | 113,5 | 113,5 | 113,5 |  |  |  |
| Leiter mm <sup>2</sup> min | 6     | 6     | 6     |  |  |  |
| Leiter mm <sup>2</sup> max | 16    | 16    | 16    |  |  |  |
|                            |       |       |       |  |  |  |
|                            |       |       |       |  |  |  |