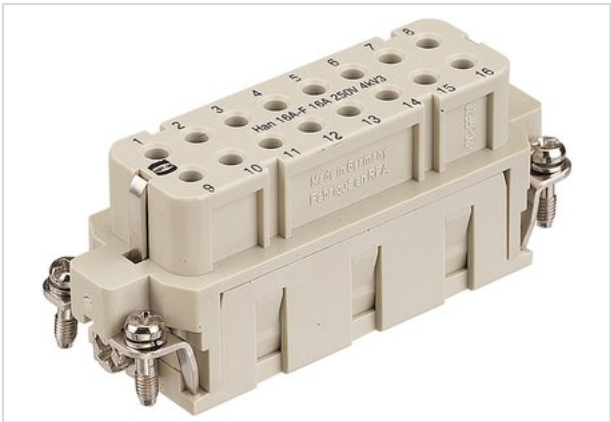




Pushing Performance

# Han 16A-BU-C



Part number	09 20 016 3101
Specification	Han 16A-BU-C
HARTING eCatalogue	<a href="https://b2b.harting.com/09200163101">https://b2b.harting.com/09200163101</a>

## Identification

Category	Inserts
Series	Han A®

## Version

Termination method	Crimp termination
Gender	Female
Size	16 A
Number of contacts	16
PE contact	Yes
Details	Please order crimp contacts separately.

## Technical characteristics

Conductor cross-section	0.14 ... 4 mm²
Electrical data acc. to IEC 61984	16 A 250 V 4 kV 3
Rated current	16 A
Rated voltage	250 V
Rated impulse voltage	4 kV
Pollution degree	3
Rated voltage acc. to UL	600 V
Insulation resistance	≥10 <sup>10</sup> Ω
Limiting temperature	-40 ... +125 °C
Mating cycles	≥500

## Material properties

Material (insert)	Polycarbonate
Colour (insert)	RAL 7032 (pebble grey)
Material flammability class acc. to UL 94	V-0
RoHS	compliant



Pushing Performance

## Material properties

ELV status	compliant
China RoHS	e
REACH Annex XVII substances	No
REACH ANNEX XIV substances	No
REACH SVHC substances	No

## Specifications and approvals

Specifications	EN 60664-1 IEC 61984
Approvals	DNV GL
UL / CSA	UL 1977 ECBT2.E235076 UL 2237 PVVA2.E318390 CSA-C22.2 No. 182.3 PVVA8.E318390

## Commercial data

Packaging size	1
Net weight	40.8 g
Country of origin	Germany
Customs tariff number	85389099